

TS4-M



Monitoring

TS4-M is one of 5 functional covers that pairs with an integrated modular junction box base (TS4-B) or with a retrofit/add-on base (TS4-R).

Features

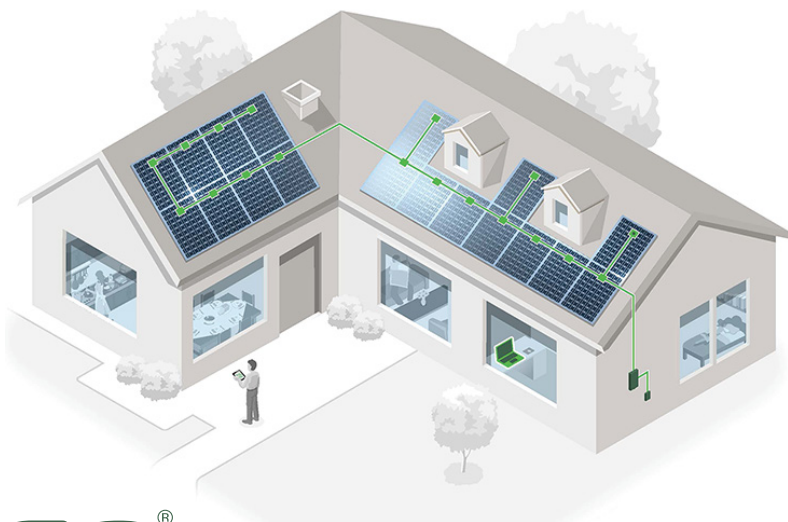
- Reduced O&M cost
- Module bar code tracking
- Warranty tracking
- Fleet management
- CRM integration

Reduced O&M Costs

- Remotely detect and diagnose performance issues
- Fix problems with a single truck roll: deploy the right person with the right skill level, equipment, and tools to service the site

Reliable Production

- Alert notifications enable you to intervene early and minimize system downtime



Tigo[®]

PV 2.0

Meet any projects' needs with the TS4 covers

Tigo has expanded its smart module platform to provide five levels of customization. TS4 increases your freedom of choice by allowing to select the right features for each project and budget.

ELECTRICAL RATINGS

INPUT

Rated DC Input Power	475W
Maximum Input Voltage	90V
Max. Continuous Input Current (I_{MAX})	12A
Maximum V_{OC} @ STC	75V
Minimum V_{MP}	16V

OUTPUT

Output Power Range	0 - 475W
Output Voltage Range	0 - V_{OC}
Rapid Shutdown UL Listed (NEC 2014 & 2017 690.12)	No
Impedance Matching Function	No
Output Voltage Limit	No
Maximum System Voltage	1500V

Cloud Connect and Gateway required for rapid shutdown compliance.



MONITORING
TS4-M

For sales info:

sales@tigoenergy.com or 1.408.402.0802 ext. 1

For product info:

Visit www.tigoenergy.com/products

For technical info:

<http://support.tigoenergy.com>

For additional info and product selection assistance, use Tigo's online design tool at www.tigoenergy.com/design



Tigo[®]

PV 2.0